

Newport Photographic Club **Competitions & Trophies**

1. Competitions

Each season there will be a series of photographic competitions. These competitions are open to all full members who have paid their annual subscription.

Unless indicated otherwise, judging for each competition will be by a judge external and independent from the club.

By entering competitions, members accept that their images may be used to represent the club in inter-club battles, external competitions and public display (except where expressly requested otherwise). It is the responsibility of each club member to remove metadata from each image if they do not want those details published. Metadata is detail attached to each image that comes from the camera. Usually this explains the camera settings but it may include personal and location details if you have chosen to add this.

Members must always provide non-watermarked images.

Competitions will usually be run in 2 groups; Intermediate and Advanced or as a combined group.

Before members enter their first competition of the season, they will choose which group they wish to join and notify the Competition Secretary by email (Competition@newportphotoclub.com). They will remain in that group for the rest of the season. There will be no automatic promotion or relegation between the groups at the end of the season, but members who have excelled in the Intermediate group will be encouraged to move up to the Advanced group. If a member wins an Intermediate group trophy in each of 2 consecutive years they will be expected to move into the Advanced group in the following season.

If a member wishes to move from the Advanced to the Intermediate group, they must do so with the agreement of the Competition Secretary. If agreed, they will remain in that group for the rest of the season.

2. League Competitions

Each group will have its own league table.

Open and themed competitions are the only competitions on which the club leagues will be based. Themes will be agreed at the annual programming meeting.

Points will be awarded as follows:

Position	Points Awarded
1 st	10
2 nd	9
3 rd	8
4 th	7
5 th	6
6 th	5
Highly commended	4
Commended	3
Unplaced	1

These points will count towards the following club trophies:

- **Photographer of the Year (Advanced)** - awarded to the member with the highest total of points in the Advanced group.
- **Roger Price Shield (Advanced)** - awarded to the Member with the highest total of points in the Advanced group, who has not won Photographer of the Year, PI Photographer of the Year or Print Photographer of the Year.
- **Print Photographer of the Year (Advanced)** - awarded to the member with the highest total of points in the Advanced group for printed images.
- **PI Photographer of the Year (Advanced)** - awarded to the member with the highest total of points in the Advanced group for projected images.
- **Photographer of the Year (Intermediate)** - awarded to the member with the highest total of points in the Intermediate group.
- **Warrender Shield (Intermediate)** - awarded to the Member with the highest total of points in the Intermediate group, who has not won PI Photographer of the Year or Print Photographer of the Year in the Intermediate group.

- **Print Photographer of the Year** (Intermediate) - awarded to the member with the highest total of points in the Intermediate group for printed images.
- **PI Photographer of the Year** (Intermediate) - awarded to the member with the highest total of points in the Intermediate group for projected images.

3. Non-league competitions

The following competitions will not contribute to the league tables however, the following trophies will be awarded under this heading:

- **Committee Cup** (Cup) - Awarded to the member whose print comes first in the competition judged by the Committee or members thereof. This is a themed, print only competition, judged as a combined group.
- **Monochrome Print of the Year** (Shield) - Awarded to the member whose monochrome print is judged to be the best in the Annual Competition, judged as a combined group. Monochrome images may **only** be in one colour and white and shades thereof. This is an open, print only competition.
- **Colour Print of the Year** (Shield)
Awarded to the member whose colour print is judged to be the best in the Annual Competition. Monochrome (see definition of Monochrome above) prints are excluded. This is an open, print only, competition, judged as a combined group.
- **Projected Image of the Year** (Shield)
Awarded to the member whose projected image is judged to be the best in the Annual Competition. This is an open competition, judged as a combined group. Colour or Monochrome images may be submitted.
- **Chair's Challenge** (Shields)
This is a themed competition for projected images with a different theme set by the Chair of the club each year. The shields are awarded to the members who come first in each of the two groups.
- **Most Improved Photographer** (Model camera trophy)
Awarded by the Committee to the member in either the Advanced or Intermediate groups who has improved most in the season.
- **Member of the Year** (Shield)
This non-photography related trophy, is awarded by the Chair to the non-committee member who has done most to support the club during the current season.
- **Audio Visual Trophy** (Shield)

Awarded to the Member who submits the winning audio-visual sequence in the competition.

4. General Rules

The general rules for each competition are as follows:

All images must be presented as prints or projected images and may have been digitally manipulated (except where otherwise stated) but the image must be the member's own work and not breach the copyright of any other author.

Members cannot enter or re-enter an image in club competitions that is:

- The same as entered in a previous competition. The only exception to this rule is for the Third Open Competition and the Annual Competitions (see below)
- The same as entered previously but in a different format (projected image/print/monochrome print).
- So alike to a previously entered image that, in the opinion of the committee, it appears the same.
- Watermarked.

Re-entry of images

- For the annual competitions, (Colour Print of the Year, PI of the Year, Monochrome Print of the Year) members may enter any image, including those entered in the current season but not those entered into competitions in a previous season.
- For the Third Open competition members may re-enter images which have not been placed (1-6) in previous competitions in the current season
- A Flow Chart at the end of these rules can be used to check the re-entry rules

Additionally, the Committee has the right to exclude images if they consider that an image has breached these rules.

Files must be given a title and uploaded to the correct competition and category via the Photo Entry tab on the club website prior to the deadline.

Unless advised otherwise, the deadline for uploading images will be 10pm on the Sunday before the competition.

Members may normally submit up to 2 prints and 2 projected images for each competition, unless otherwise stated.

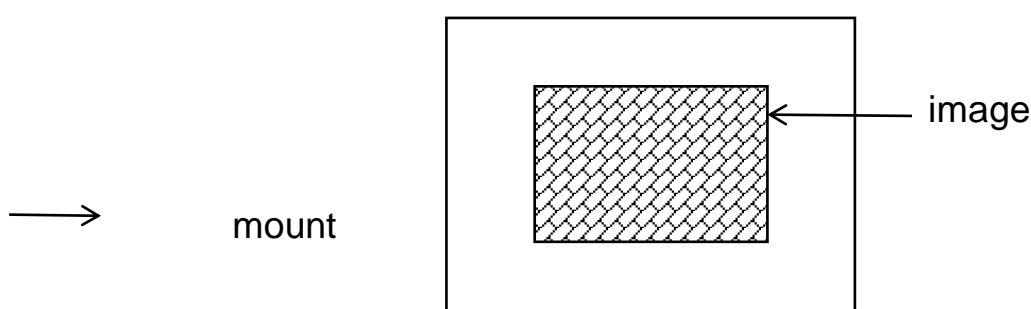
The running order will be e-mailed to all members by the Competition Secretary before the competition.

5. Prints

Prints must be able to be placed on the display stand and should not exceed the sizes stated below. The back of the image should show the title of the print and the author's name and indicate the top. The running order number for that image should also be marked on the back.

A projected image version of the prints must be uploaded to the Photo Entry website prior to the competition in the same format as the Projected Images.

The maximum size of a mount is 50x40cm **within which limits** the print **must** be placed.



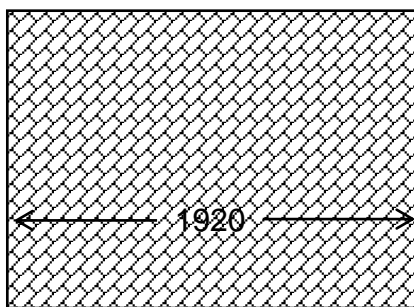
Photographic images can be reproduced on a wide variety of alternative media including metal, glass, wood and woven material. Members may enter images into the print category on any form of alternative media. However, before doing so they should discuss it with the Competition Secretary to make sure the chosen media can be satisfactorily and safely displayed in the competition, both as the actual image and also as a projectable thumbnail image.

7. Projected images

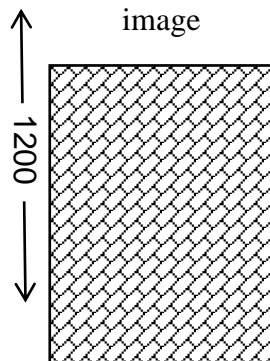
Projected images are to be submitted as files in JPG format (high quality).

The image size must be no greater than a width of 1920 pixels and a height no greater than 1200 pixels (whichever is the greater). This size may be varied at the discretion of the Competition Secretary depending on the projector being used. The maximum allowable size will be displayed on the photo entry website, as well as being included in the calling notice for competition entries.

Maximum width of an image



Maximum height of an image



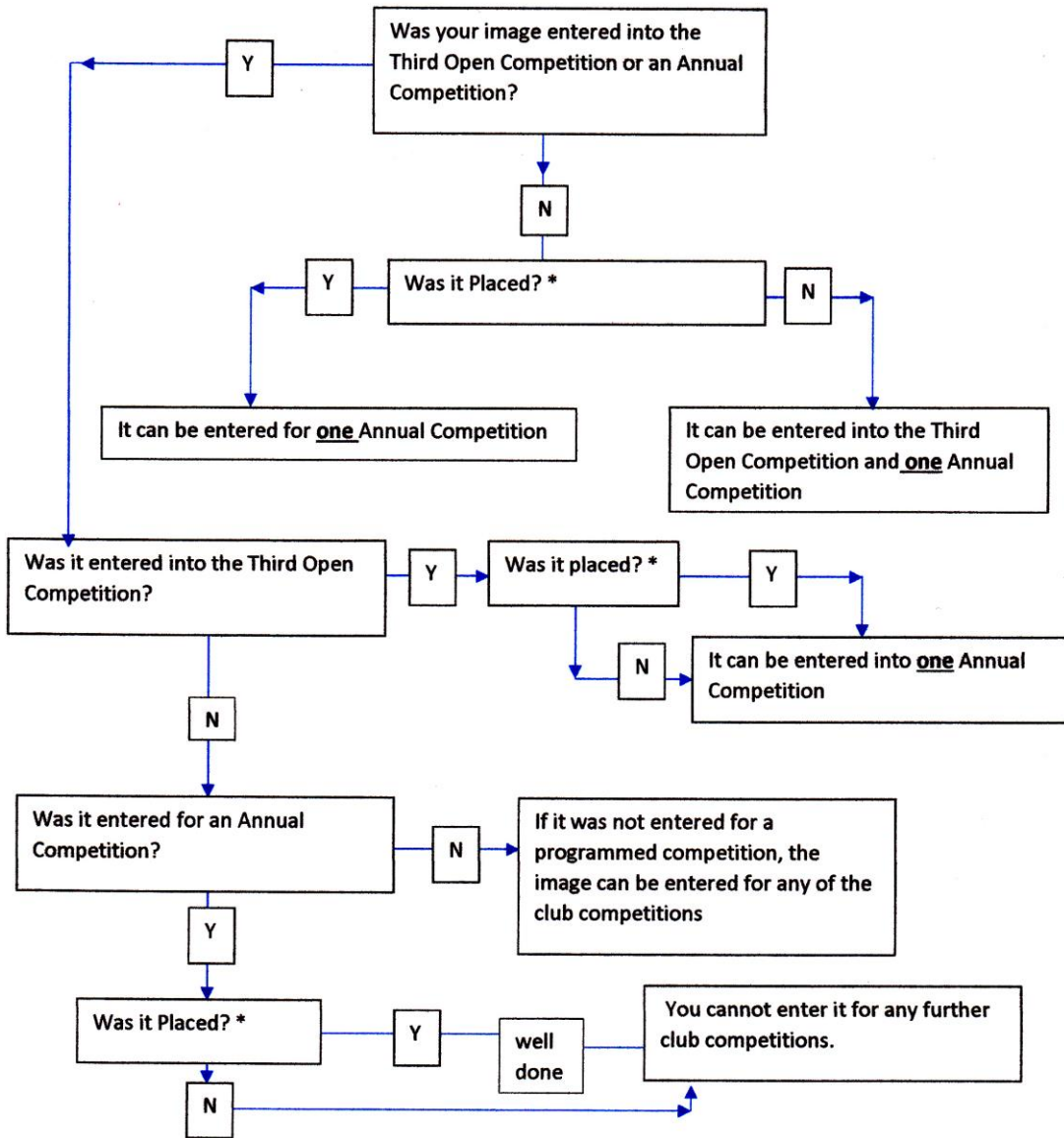
Images should use sRGB colour space.

A detailed document defining how to prepare images can be found on the club website in the <Documents> link.

NPC Quick Guide to Trophies

Trophy	Theme	League (or)	Print or Projected Image	Advanced or Intermediate	Judging (Internal or External)
Photographer of the year (2 trophies – 1 st league place)			Both	A + I	E
Roger Price Shield			Both	A	E
Print Photographer of the Year (2 trophies)			Print	A + I	E
PI Photographer of the Year (2 trophies)			Projected Image	A + I	E
Warrender Shield			Both	I	E
Committee Cup			Print	Combined	I
Monochrome Print of the Year			Print	Combined	E
Colour Print of the Year			Print	Combined	E
Chair's Challenge (2 trophies)			Projected Image	A + I	I
Projected Image Of the Year			Projected Image	Combined	E
Most Improved Photographer	N/A		Both	Combined	I
Member of the Year	N/A	N/A	N/A	Combined	I
Audio Visual Anniversary Trophy			N/A	Combined	E

RE-ENTRY CHECKER



****"Placed" means in the first 6**